

# Support is available!

Q&A

What is the Caregiving Visa (Caregiving residence status for foreign care workers)?

**Q** When do applications for the Caregiving Visa open?

**A** The Caregiving Visa is officially available from September 1, 2017, but applications are being accepted from June 1 2017.

**Q** I received a care worker qualification several years ago. Am I eligible for the Caregiving Visa?

**A** The Caregiving Visa is new. Several years ago, even if foreign nationals acquired a care worker qualification and found employment at a care facility, they were unable to work because a Caregiving Visa did not exist and they were ineligible for other visas. However, holders of care worker qualifications that have been offered employment by a care facility are now eligible for the Caregiving Visa even if they are not currently working as a caregiver (e.g. if they are currently a housewife or working in another field). Furthermore, foreign nationals holding a Japanese care worker qualification but currently residing in their own countries are also eligible for the Caregiving Visa.

**Q** Can foreign nationals currently working at care facilities also receive a Caregiving Visa?

**A** It depends. The requirement for the Caregiving Visa is that the applicant must hold a care worker qualification. However, this qualification may only be acquired through a training institution. In other words, the applicant must have graduated from a vocational college or equivalent institution. Those who have acquired a qualification solely on the basis of their practical experience are ineligible. Only foreign nationals working at care facilities who attended a vocational college to receive their care worker qualification are eligible.

**Q** If I receive a Caregiving Visa, will my family also be able to receive visas?

**A** The spouses and children of foreign nationals holding a Caregiving Visa can obtain a Dependent Visa.

**Q** I heard that it is possible to work at a care facility if you have an EPA (Economic Partnership Agreement) Designated Activities Visa. How is this different to the Caregiving Visa?

**A** Only foreign nationals from the Philippines, Indonesia and Vietnam are eligible for visas under the EPA (Economic Partnership Agreement). Furthermore, the acquisition of a Designated Activities Visa under the EPA system is subject to strict conditions, and visas may only be obtained through the Japan International Corporation of Welfare Services. On the other hand, the newly established Caregiving Visa is more practical as it is granted independently as long as the conditions on the applicant and company are met.

**Q** What is the difference between this visa and the Technical Intern Trainee visa?

**A** There are three major differences.

1. Period of stay: The Caregiving Visa has a maximum period of stay of five years and is renewable. Technical Intern Trainees can stay for a maximum of three years; this can be extended to five years if terms and conditions are met. However, after the completion of three years, the applicant must temporarily return to their home country. The Technical Intern Trainee visa cannot be renewed.

2. Participating countries: People of any nationality can apply for the Caregiving visa. However, Technical Intern Trainees must be from one of fifteen designated countries: China, Indonesia, Vietnam, the Philippines, Thailand, Peru, Laos, Sri Lanka, India, Myanmar, Mongolia, Uzbekistan, Cambodia, Nepal or Bangladesh.

3. Recruiting Organization: The Caregiving Visa enables the holder some freedom in their employment contracts with care facilities. Technical Intern Trainees work under the responsibility and supervision of cooperative associations, commerce and industry associations, and other non-profit organizations.

**Q** What level of Japanese ability is required?

**A** Applicants are required to have attained a level equivalent to N2 or higher in the Japanese Language Proficiency Test.

Japanese Language Proficiency Test (JLPT): Summary of competence for each level

N1 : The ability to understand Japanese used in a wide variety of circumstances.  
N2 : The ability to understand Japanese used in everyday situations and in a variety of circumstances to a certain degree.  
N3 : The ability to understand Japanese used in everyday situations to a certain degree.  
N4 : The ability to understand basic Japanese.  
N5 : The ability to understand some basic Japanese.

## Caregiving Visa Acquisition Process

- STEP 1** Study in Japan (at a Japanese language school or other institution)
- STEP 2** Training facility Two years or more training at a care worker training facility (such as a vocational college)
- STEP 3** Gain employment at a care facility after receiving care worker qualification
- STEP 4** Apply for change of status of residence at Immigration Bureau
- STEP 5** Start work

Make your dream a reality!  
Work with us!

Students of Japanese,  
please answer the  
attached questionnaire!!

Senior Citizens Welfare Service  
Fukushima Ward Council on Social Welfare

Fukushima General Social Welfare Center

Shichishanomiya 111, Watari, Fukushima-shi, Fukushima 960-8141 Japan  
TEL : 024-523-1256 FAX : 024-573-8201  
URL : <http://www.fukushimakenshakyo.or.jp>  
E-mail : [shisetsu@fukushimakenshakyo.or.jp](mailto:shisetsu@fukushimakenshakyo.or.jp)

Students of Japanese, please fill out attached questionnaire!

You can work in Japan for a maximum of 5 years  
no matter where you are from.

かいご (kaigo)

# 在留資格「介護」を

Kaigo (care worker) visa, Visa for foreign care workers

## ご存知ですか?

Do you know about the Kaigo (Care worker) residence status?



Learn world class Japanese-style  
caregiving and take your skills  
back to your home country.

What is caregiving?

Caregiving is the provision of assistance to those who experience difficulties in their daily lives, such as the elderly and the physically and mentally disabled with the aim of helping them live more independent lives. Those receiving care are assisted in daily activities, housework, health management and social activities.

How long can I stay in Japan?

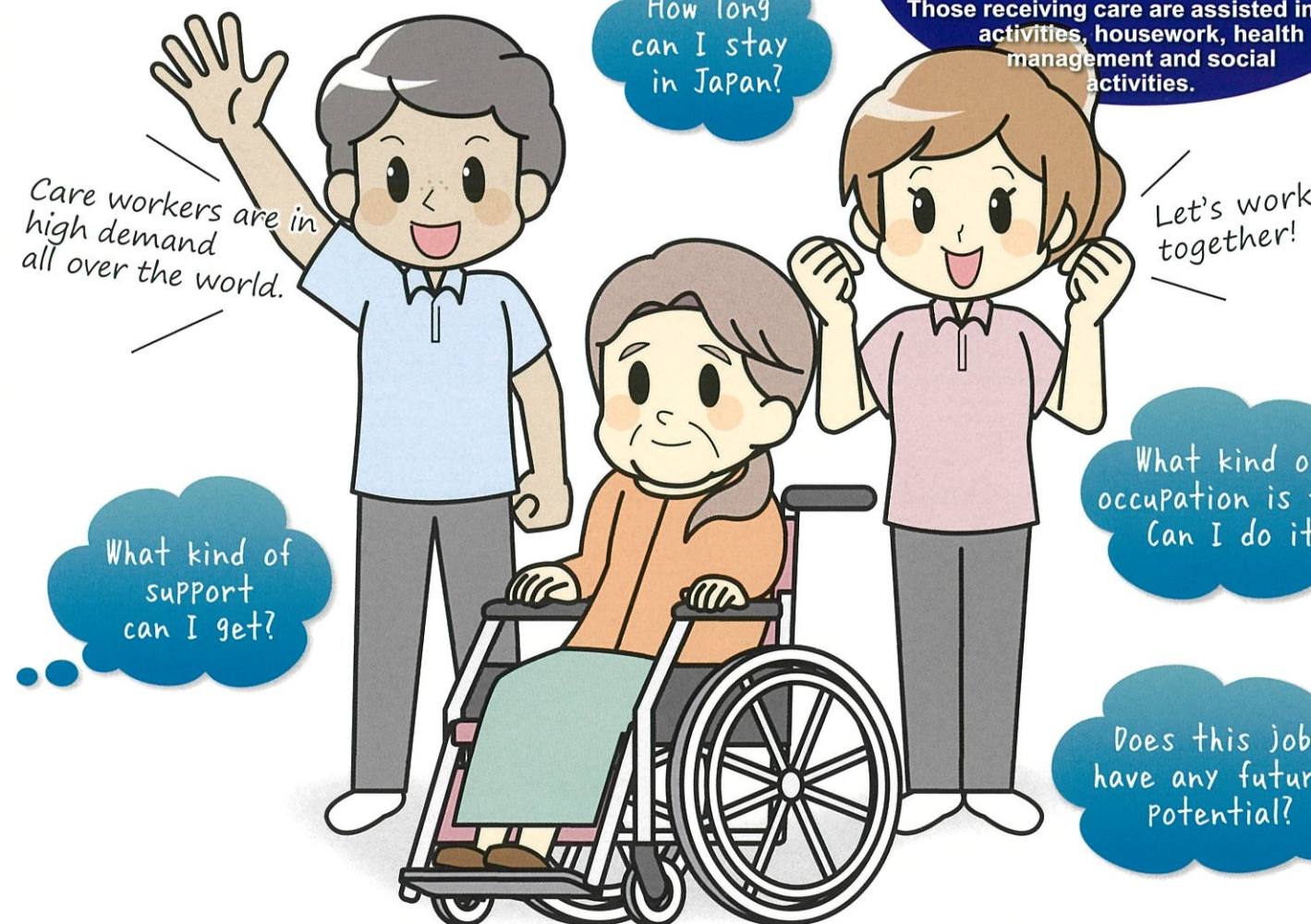
Let's work together!

Care workers are in high demand all over the world.

What kind of support can I get?

What kind of occupation is this? Can I do it?

Does this job have any future potential?



Demand is increasing as society ages

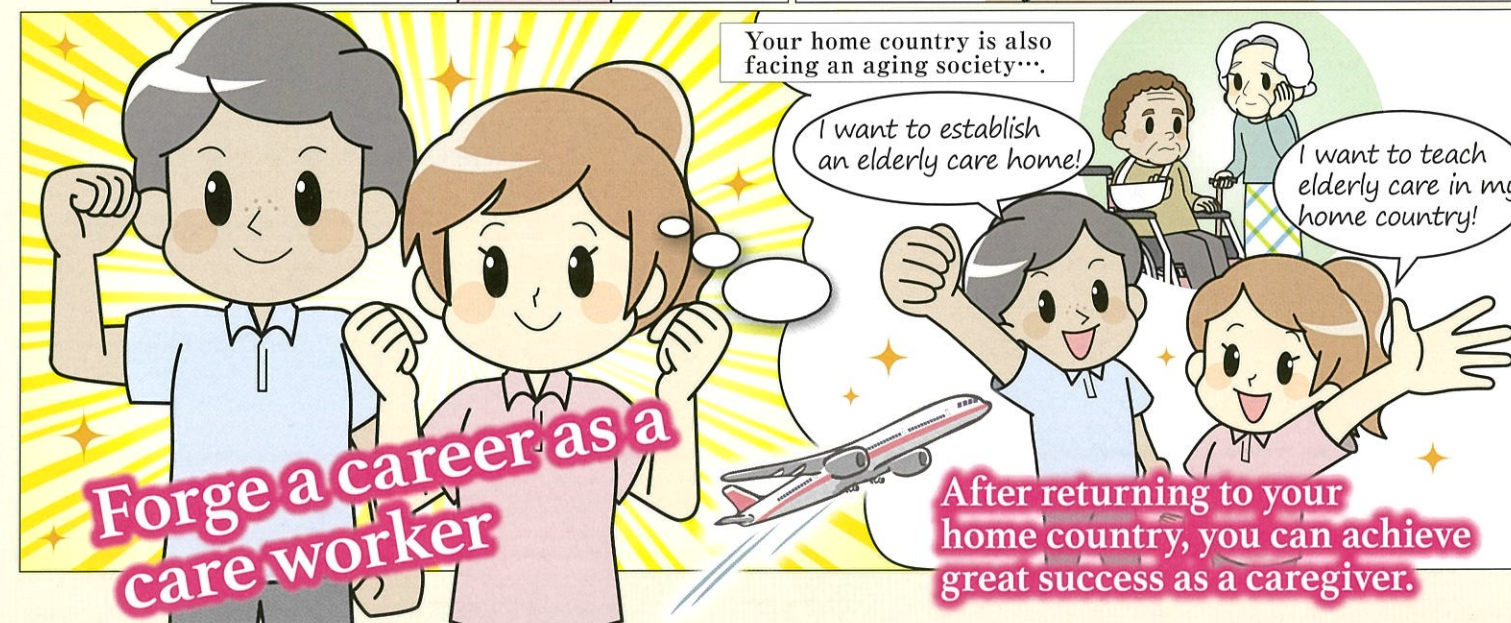
# Care worker

National qualification for social welfare work (physical care, life support, etc)

## Japanese-style elderly care will bring happiness to your family and home country.

In Asia, the aging population is becoming a serious social problem in recent years, so we have to think about elderly care. Japan is facing this problem right now. Why don't you learn Japanese-style caregiving and try to get a qualification?

With the sensitivity and qualifications you gained in your workplace, you can bring happiness to your family and home country. Additionally, you can be a caregiving pioneer in your home country.



## What is this "Japanese-style caregiving" that is drawing attention now?

Do you think that parents should be taken care of by their children at home? This used to be the case in Japan. However, attitudes have changed as average life expectancy increases and the numbers of children decrease. The nursing care insurance system was set up in 2000 so that society as a whole would bear the burden of elderly care. Japan, whose society is aging faster than any other country in the world, boasts world-leading elderly care. Japanese caregiving, filled with sensitivity and placing importance on respect, is gaining wide attention.

- ### 1 Hearts and Minds

We support clients's hearts and minds, providing assistance that accommodates their individual abilities, to enable them to live independent, healthy lives.
- ### 2 A wide range of caregiving services

There are various facilities such as special nursing homes for the elderly, elderly healthcare facilities and day service centers. We provide diverse elderly care services at each facility. Caregiving services can also be used at home.
- ### 3 Care insurance system.

We are developing our business based on the social security and care insurance systems. As we are funded by the taxpayer-supported national care insurance, clients have less financial burden to bear. On the other hand, workers have a stable working environment with firmly established wages, salaries and welfare programs. Management can also run their businesses without influence from the economy.
- ### 4 Business model

This knowledge may assist you in starting your own business in your home country. If you have aspirations, the know-how and connections you foster here can help you start a business in your home country. You can also be a bridge between exchange students wishing to study under the Caregiving Visa system and care facilities in Japan.

Please teach me! Senior!

**We talk to international students who work at a caregiving facility.**  
Special nursing home for the elderly - Komineen (Shirakawa - Fukushima)

*I love Miso Ramen!!*

**Torres Ailene Briones**  
(29 years old)  
From the Philippines

I don't give up even if the job is sometimes hard, because I want to see clients smiling. Getting used to live in Japan may be difficult, but it gets easier. Let's work together!

*I like conveyor belt sushi and ramen. Eating good food makes me happy.*

**Santos Roxanne Gaye Laygo**  
(28 years old)  
From the Philippines

Caregiving is hard, but I think that it is an important job that is becoming increasingly necessary. So I appreciate everyone who teaches Japanese-style caregiving. I will continue to study hard. If you have something you do not understand, I will help you to learn it. When you are lonely, come and hang out with me!



**Message from a care facility**

**Many care facilities in Japan are ready to accept international students.**  
Special nursing home for the elderly - Mizuwanosato

**Hiroto Oguma**  
- Facility Manager

Elderly care is now a common field of work so you can start at any time as long as arrangements have been made with a facility. Receiving a qualification in world class Japanese-style caregiving can be in the interests of you, your family and your country. The number of businesses providing caregiving services to Japanese immigrants is increasing, presenting more work opportunities. Many facilities in Japan need the energy of foreigners. We intend to support international students in a variety of ways, including in their day to day lives. Please contact us anytime. We look forward to hearing from you.

25-2, Matsukawamachi Mizuhara, Fukushima-shi, Fukushima, 960-1243, Japan  
**TEL 024-567-7700**  
 FAX 024-567-7400  
 URL <http://www.ai-ai.or.jp>  
 E-mail [info@ai-ai.or.jp](mailto:info@ai-ai.or.jp)